

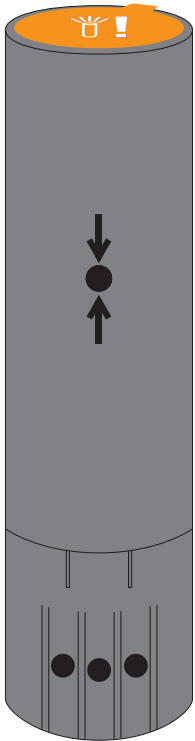
**SMAXTEC  
PH PLUS BOLUS  
QUICKSTART  
GUIDE**

1. Inhalt  
Conteúdo

| Content  
| محتوى

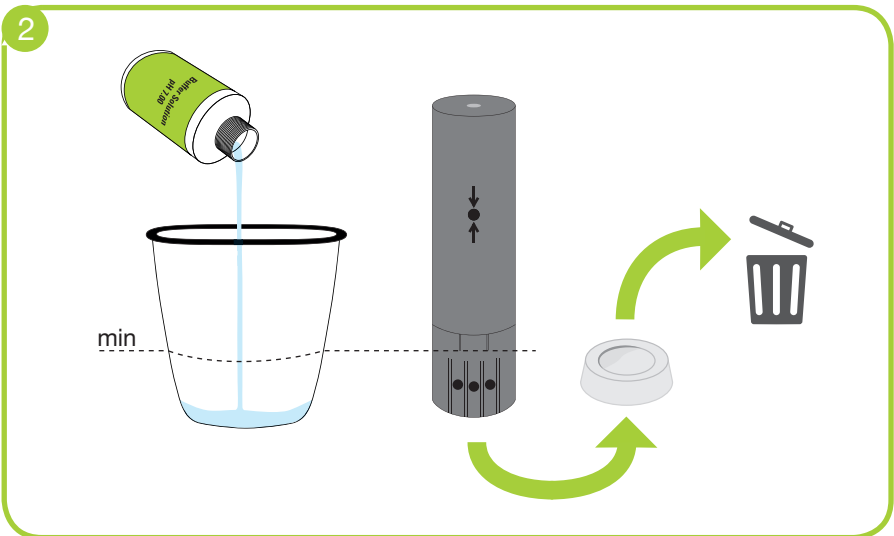
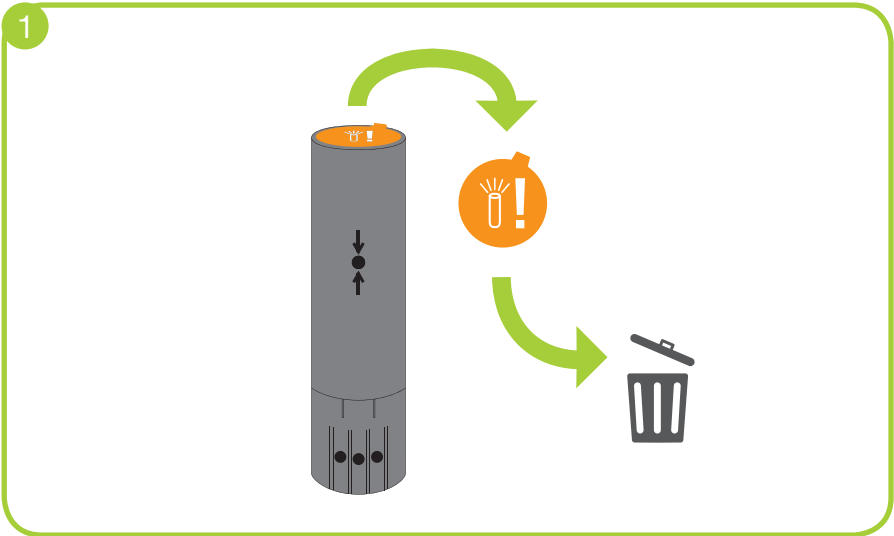
| Contenu  
| 内容

| Contenido  
| Содержание





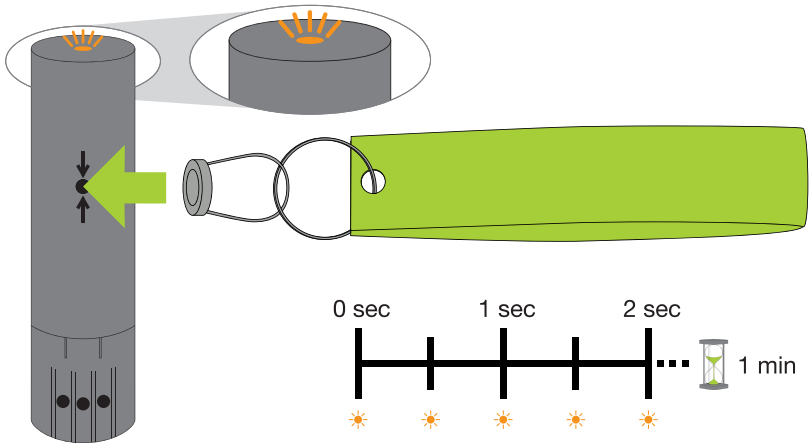
2. Initialisierung | Initialisation | Initialisation | Inicialización  
Inicialização | تهئية | 初始设置 | Инициализация



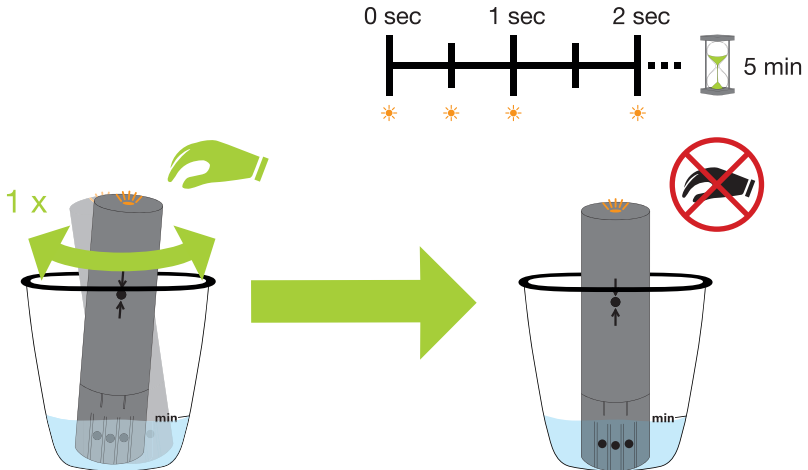


2. Initialisierung | Initialisation | Initialisation | Inicialización  
Inicialização | تهيئة | 初始设置 | Инициализация

3a



3b





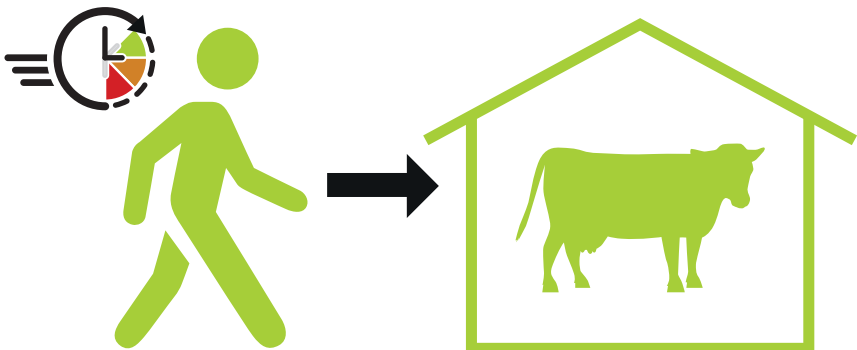
2. Initialisierung | Initialisation | Initialisation | Inicialización  
Inicialização | تهئية | 初始设置 | Инициализация

4a

0 sec 1 sec 2 sec ... 30 min

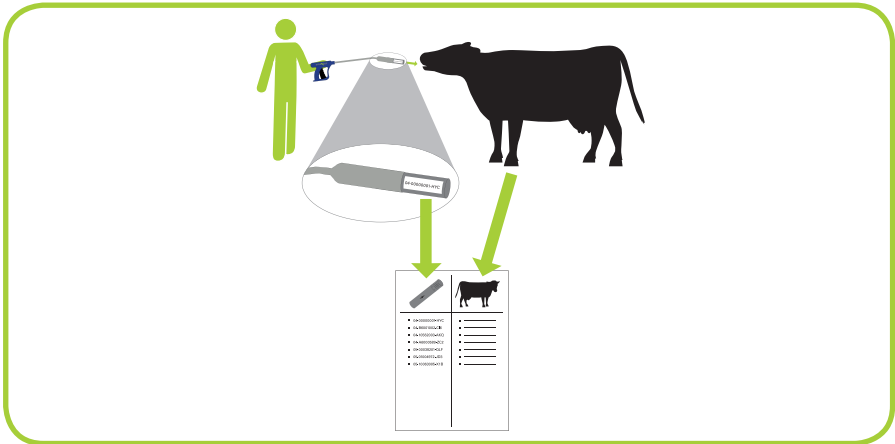
4b

0 sec 1 sec 2 sec ... 30 min



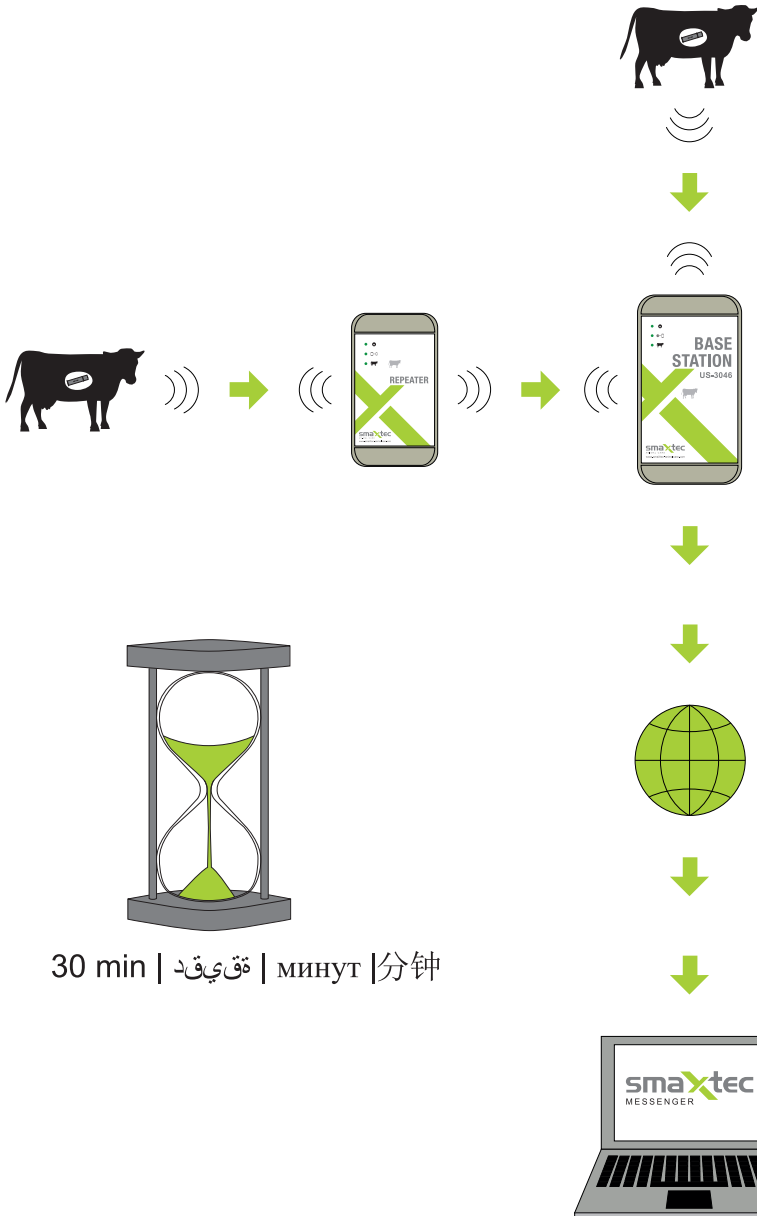


3. Eingabe | Application | Administration | Aplicación  
Aplicação | إدخال | 輸入 | Ввод данных



4. Aktivierung | Activation | Activation | Activación  
Ativação | تفعيل | 激活 | Активация





30 min | ةق يقد | минут | 分钟

smaXtec Support  
Belgiergasse 3 | A-8020 Graz | Austria  
Phone: +43 316 46 15 88 – 800  
Email: [support@smaXtec.com](mailto:support@smaXtec.com)